

## Template

### for Evidence(s)

## UI GreenMetric Questionnaire

University : IFSULDEMINAS  
Country : BRAZIL  
Web Address : <https://www.ifsuldeminas.edu.br/index.php>

### [1] Setting and Infrastructure (SI)

#### [1.4] Campus Setting

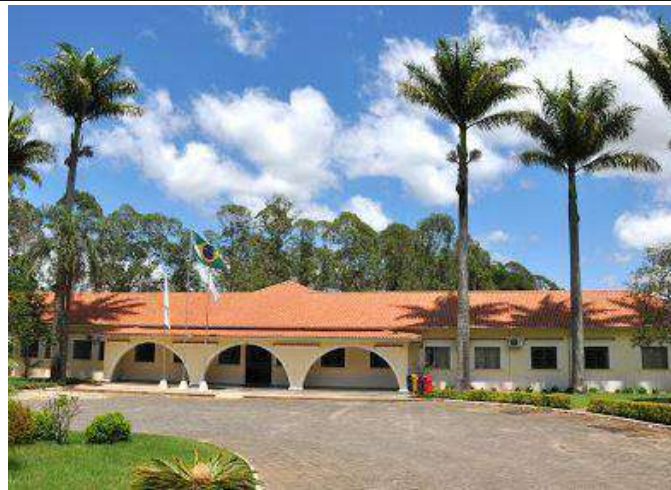


Figure 1: Muzambinho Main Campus.



Figure 2: Muzambinho Main Campus.



Figure 3: Muzambinho Main Campus.



Figure 4: Muzambinho Main Campus.





Figure 5: Muzambinho Campus - CeCAES.



Figure 6: Muzambinho Campus - Commercial College.

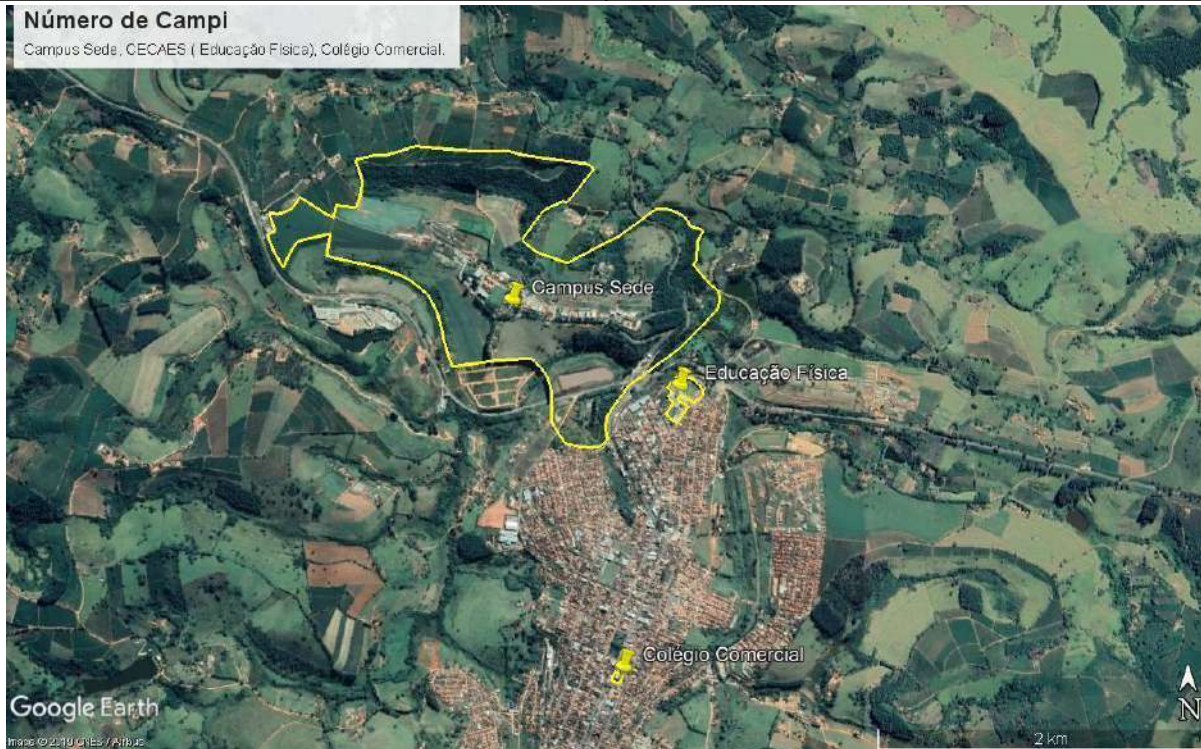


Figure 7: Muzambinho - Main Campus, CeCAES and Commercial College.



Figure 8: Muzambinho Campus - Main Campus configuration.



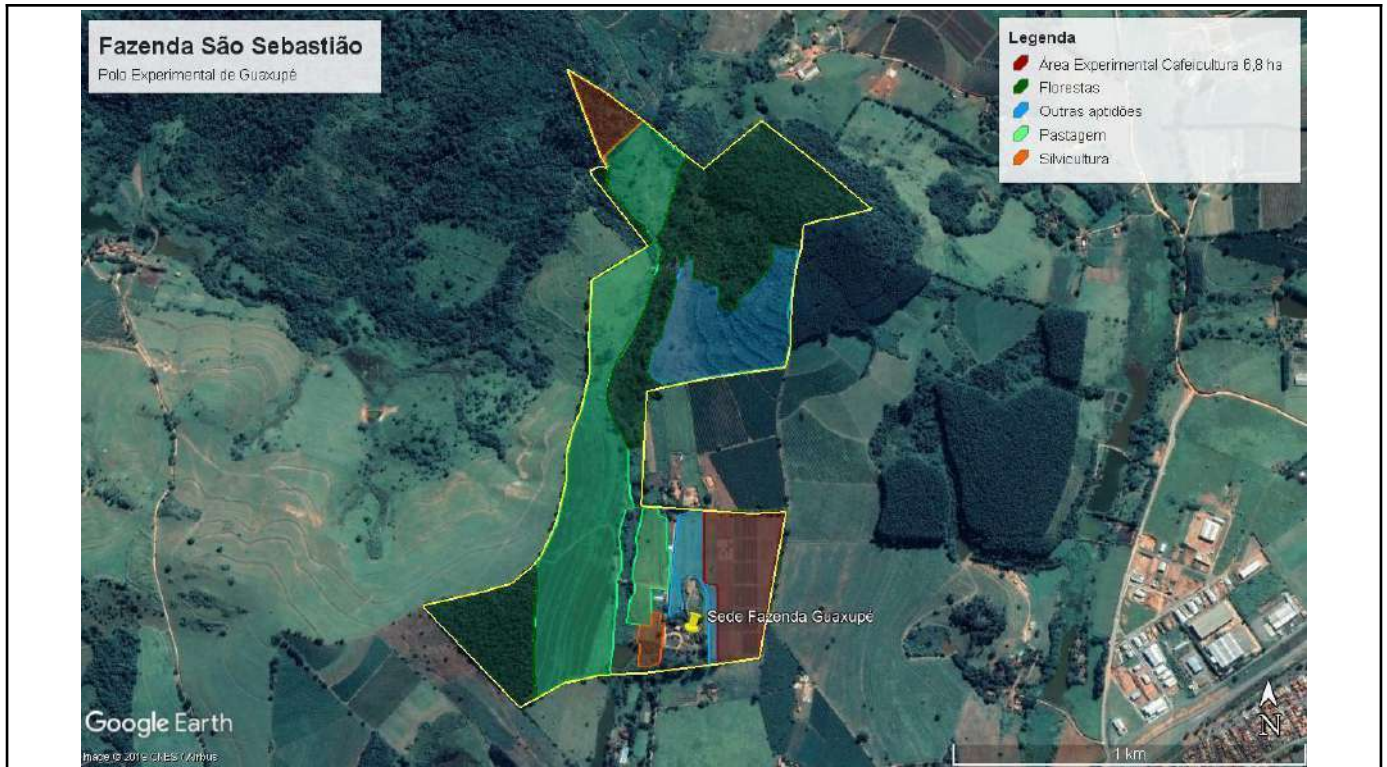


Figure 9: Muzambinho Campus - São Sebastião Farm (Guaxupé Experimental Pole) configuration.



Figure 10: Campus Muzambinho - CeCAES.



Figure 11: Muzambinho Campus - Commercial College.

## Description

[Muzambinho Campus](#) is IFSULDEMINAS biggest and main campus. Former Federal Agrotechnical School of Muzambinho, it is located in the Morro Preto rural neighborhood, addressed on the km 35 of the BR 491 road. Although there are now several other courses, the predominance is still in agriculture. With an area of 218 ha, it counts on the cultivation of vegetables, annuals and perennials, and also with the zootechnical sectors of small, medium and large animals.

In addition to the main Campus, there are another 3 (three) units for academic purposes, namely the Commercial College (figure 6), the CeCAES (Center for Sciences Applied to Education and Health, figure 5) and the São Sebastião Farm (figure 9), where is located an extension of the Innovation Pole, functioning as a Technology Validation Center in Coffee Culture.

Source: IFSULDEMINAS - Muzambinho Campus.