

Template for Evidence(s) UI GreenMetric Questionnaire

University : IFSULDEMINAS
 Country : BRAZIL
 Web Address : <https://www.ifsuldeminas.edu.br/index.php>

[1] Setting and Infrastructure (SI)

[1.1.1] Total Area on Campus for Water Absorption Besides the Forest and Planted Vegetation (m²)

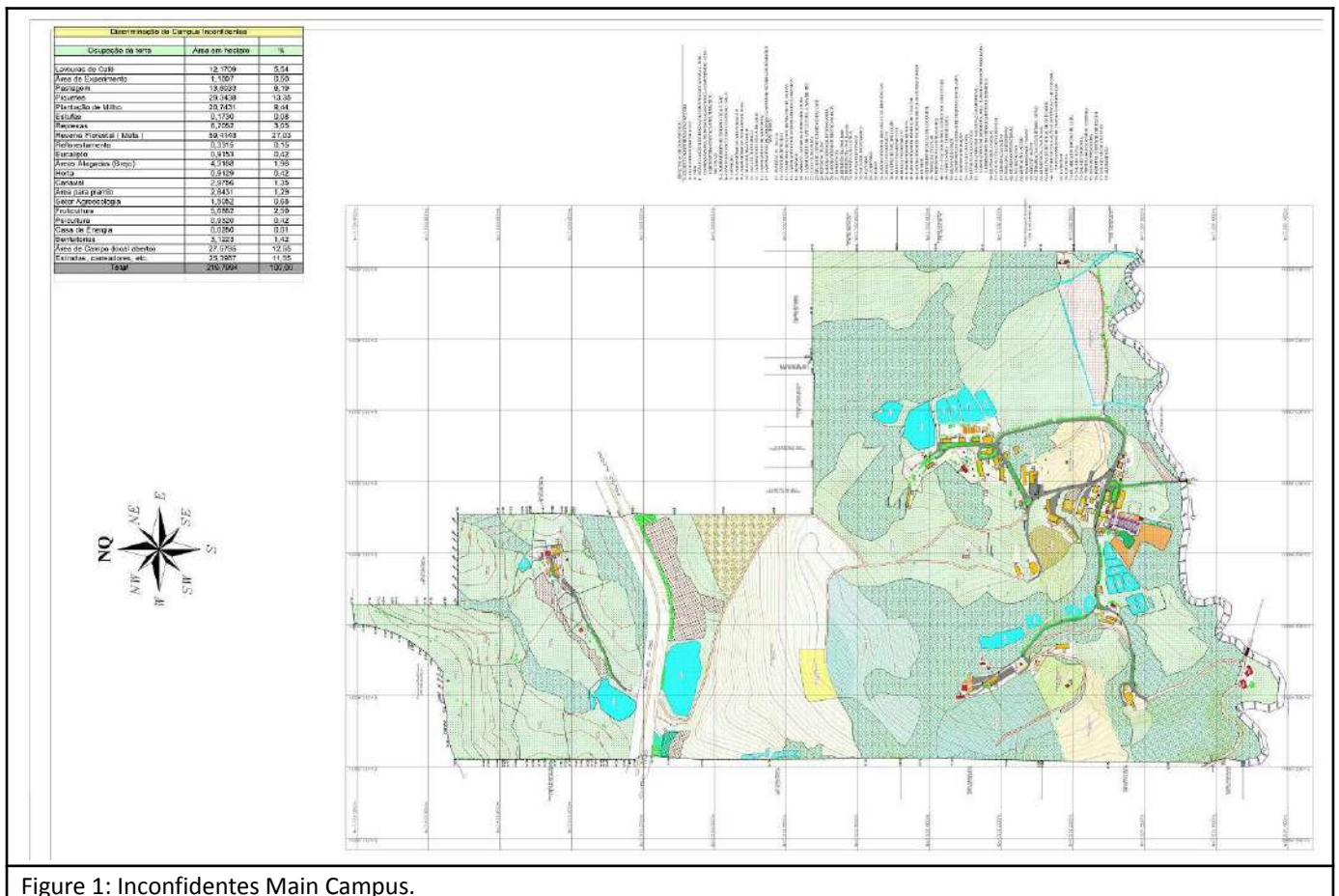


Figure 1: Inconfidentes Main Campus.



Figure 2: Machado Main Campus.

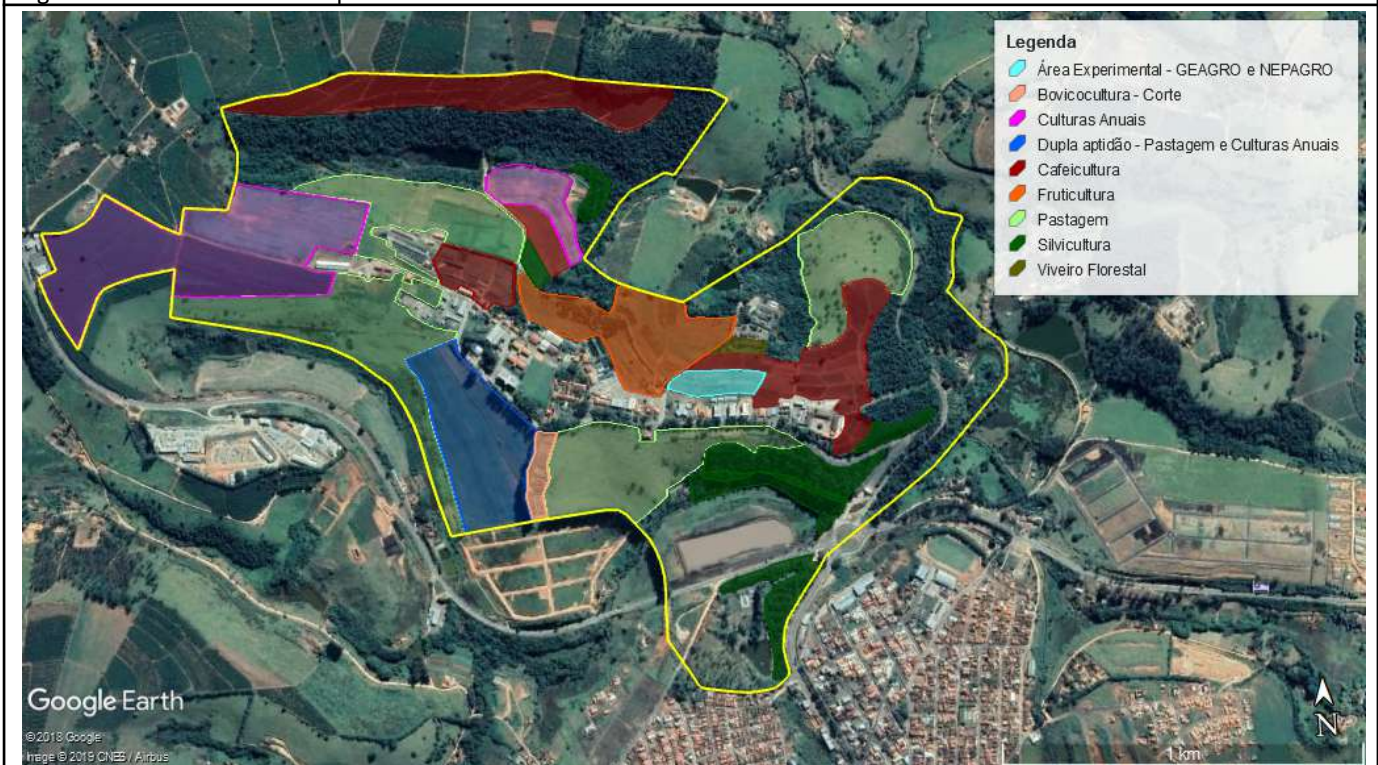


Figure 3: Muzambinho Campus.



Figure 4: Passos Main Campus.



Figure 5: Poços de Caldas Campus.



Figure 6: Pouso Alegre Campus.



Figure 7: Carmo de Minas Campus.



Figure 8: Três Corações Main Campus.



Figure 9: IFSULDEMINAS Rectory.

Description

IFSULDEMINAS have **1,701,603 m²** on all campuses for water absorption besides the forest and planted vegetation, which corresponds to **23,54%** of the total area. Source: IFSULDEMINAS. Images captured by SICAR and Google Earth applications.