

Template for Evidence(s) UI GreenMetric Questionnaire

University : IFSULDEMINAS
 Country : BRAZIL
 Web Address : <https://www.ifsuldeminas.edu.br/index.php>

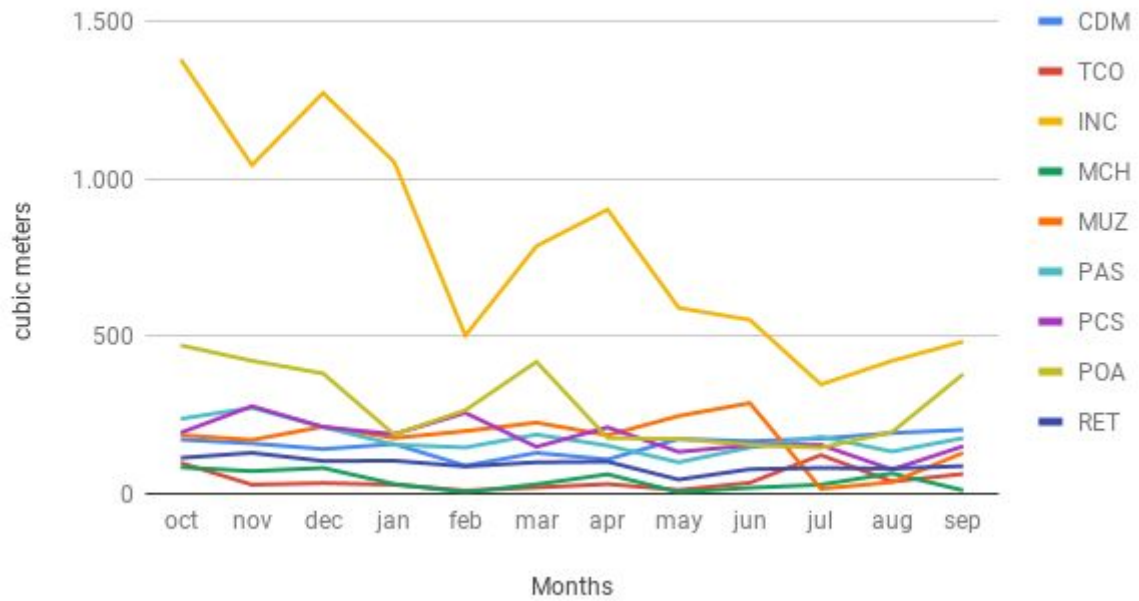
[4] Water (WR)

[4.4] Consumption of Treated Water (m³)

IFSULDEMINAS Treated Water Consumption (m ³)											
Year	Months	Total	CDM	TCO	INC	MCH	MUZ	PAS	PCS	POA	RET
2019	oct	2.935	172	98	1.378	84	186	238	194	471	114
	nov	2.578	160	29	1.043	72	171	273	278	422	130
	dec	2.653	142	34	1.272	82	213	212	212	382	104
2020	jan	2.086	158	29	1.053	31	177	156	189	188	105
	feb	1.561	89	10	502	5	199	147	257	265	87
	mar	2.048	130	20	786	30	226	188	149	419	100
	apr	1.933	109	31	902	62	186	153	211	177	102
	may	1.480	174	12	590	5	247	100	133	174	45
	jun	1.596	167	35	552	19	288	147	154	156	78
	jul	1.254	175	123	347	29	16	181	155	146	82
	aug	1.243	193	39	422	65	37	134	77	196	80
	sep	1.686	203	63	483	11	130	177	151	380	88
	Total		23.053	1.872	523	9.330	495	2.076	2.106	2.160	3.376
Average		1.921	156	44	778	41	173	176	180	281	93

Table 1: IFSULDEMINAS treated water consumption in the last 12 months. Source: IFSULDEMINAS.

Treated Water Consumption 2019-2020 - Campi



Graphic 1: IFSULDEMINAS treated water consumption in the last 12 months.

Description

IFSULDEMINAS consumed **23,053 (twenty-three thousand and fifty-three) cubic meters (m³)** of treated water in 2019/2020. The chart shows the seasonality of consumption, which is lower in non-school periods, and the impact of Covid-19 pandemia. Source: IFSULDEMINAS, based on Copasa, SAAE (Machado and Carmo de Minas) and DMAE (Poços de Caldas) bills.