

Template for Evidence(s) UI GreenMetric Questionnaire

University : IFSULDEMINAS
Country : BRAZIL
Web Address : <https://www.ifsuldeminas.edu.br/index.php>

[1] Setting and Infrastructure (SI)

[1.11] Total area on campus for water absorption besides the forest and planted vegetation (meter²)

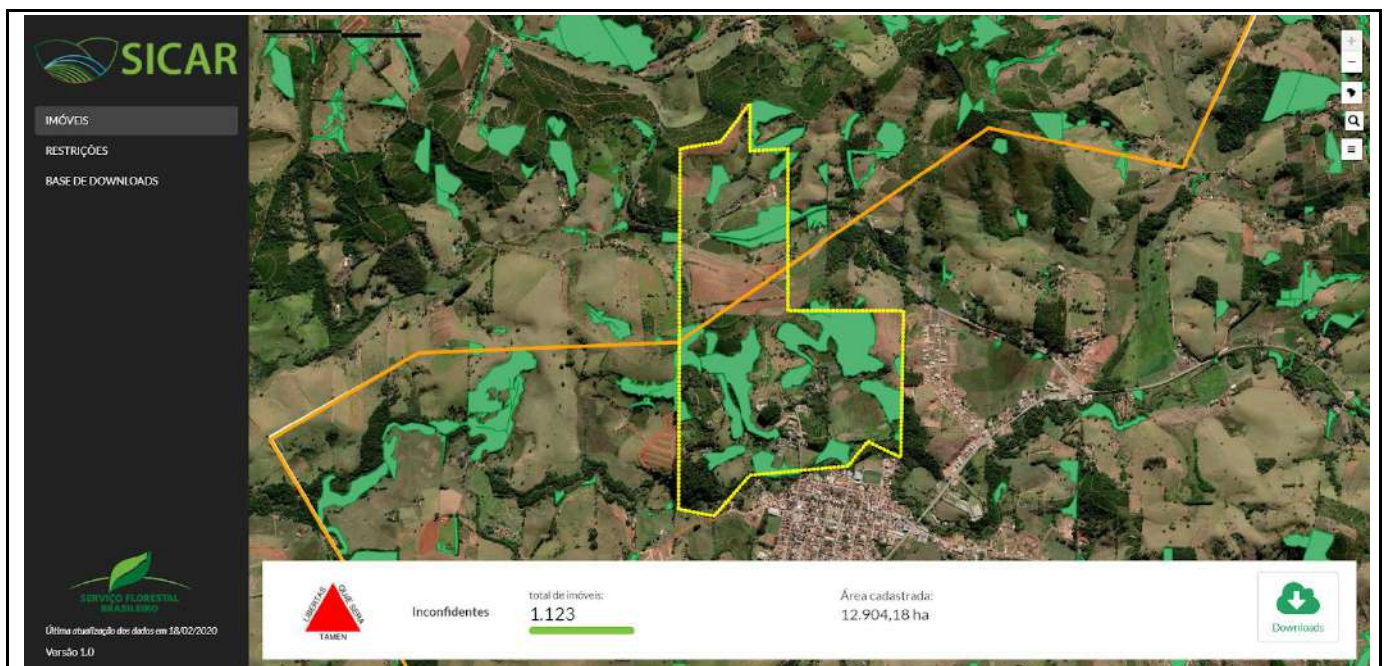


Figure 1: Inconfidentes Main Campus.



Figure 2: Machado Main Campus.

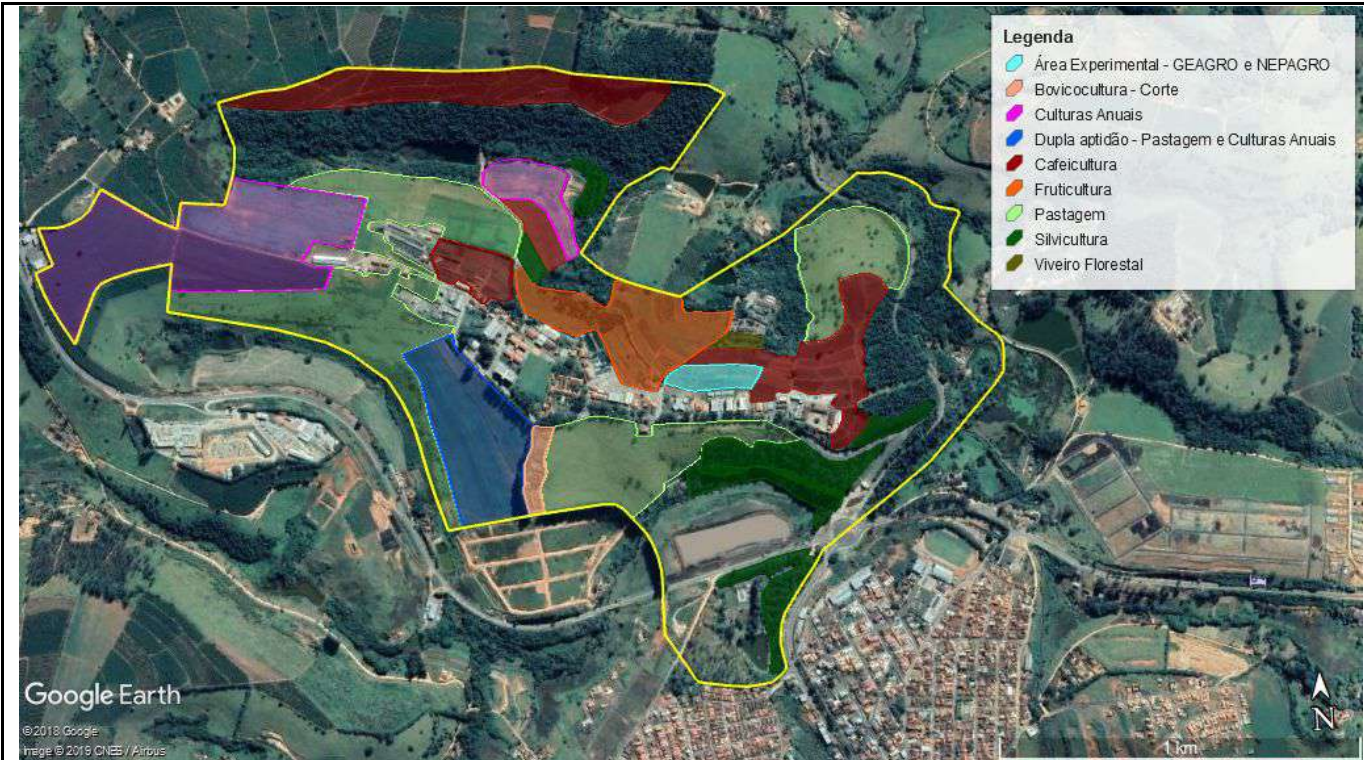


Figure 3: Muzambinho Campus.

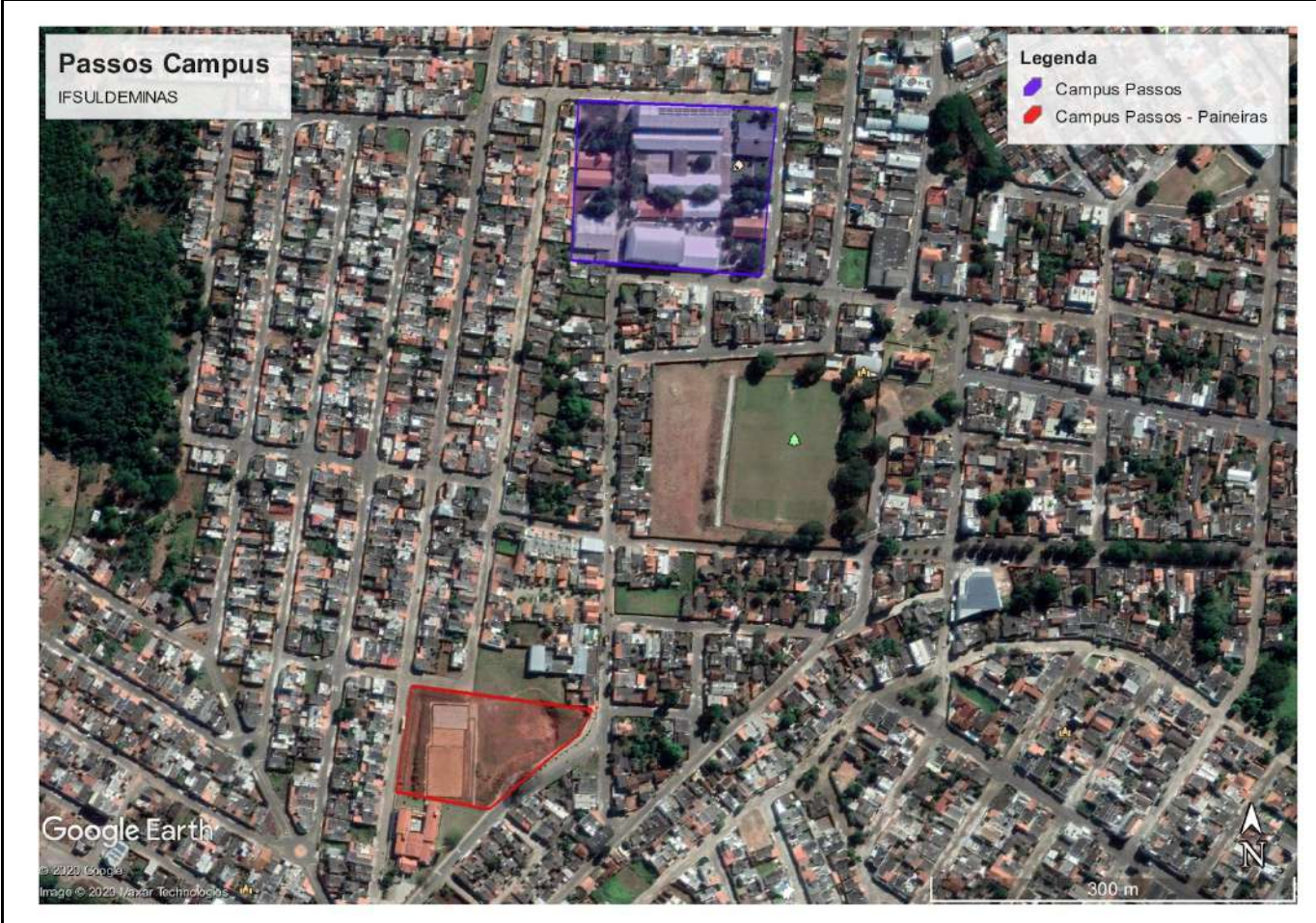


Figure 4: Passos Main Campus and Paineiras Complex.



Figure 5: Poços de Caldas Campus.

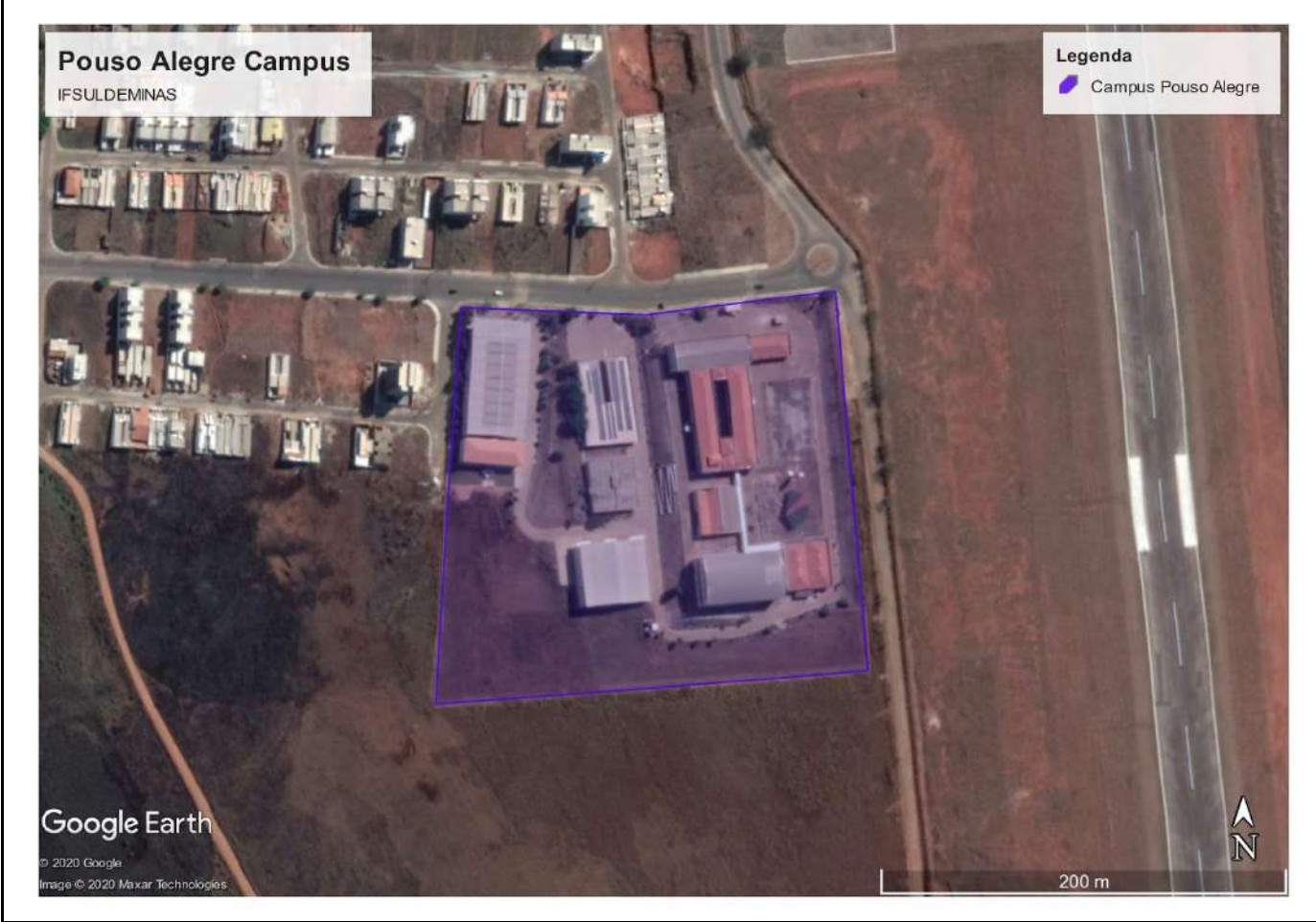


Figure 6: Pouso Alegre Campus.



Figure 7: Carmo de Minas Advanced Campus.



Figure 8: Três Corações Advanced Campus and Atalaia Complex.



Figure 9: IFSULDEMINAS Rectory.

Description

IFSULDEMINAS have **1,521,654 m²** on all campuses for water absorption besides the forest and planted vegetation, which corresponds to **21,05%** of the total area. Source: IFSULDEMINAS. Images captured by SICAR and Google Earth applications.