

Template for Evidence(s) UI GreenMetric Questionnaire

University : IFSULDEMINAS
Country : BRAZIL
Web Address : <https://www.ifsuldeminas.edu.br/index.php>

[1] Setting and Infrastructure (SI)

[1.5] Total main campus area (meter²)



Figure 1: Campus Inconfidentes.



Figure 2: Campus Machado.



Figure 3: Campus Muzambinho.



Figure 4: Campus Passos.



Figure 5: Campus Poços de Caldas.



Figure 6: Campus Pouso Alegre.



Figure 7: Campus Carmo de Minas.



Figure 8: Campus Três Corações.

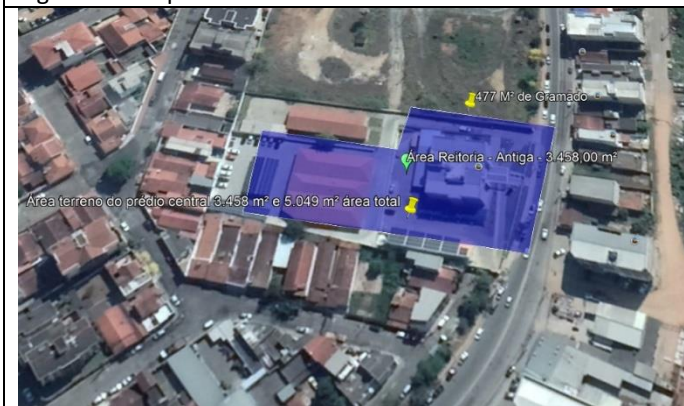


Figure 9: Rectory.

Description

Campus	Area (m ²)	Setting
Carmo de Minas	104.867,00	Rural
Três Corações	11.387,80	Urban
Inconfidentes	2.344.277,46	Rural
Machado	1.636.458,20	Rural
Muzambinho	3.003.964,33	Rural
Passos	30.446,85	Urban
Poços de Caldas	57.216,76	Urban
Pouso Alegre	15.000,00	Urban
Rectory	3.458,00	Urban
Total	7.207.076,40	

Table 1: IFSULDEMINAS total campi area and setting.

Total area in square meters of all nine (9) units of IFSULDEMINAS. Source: Sistema de Gerenciamento dos Imóveis de Uso Especial da União (Union Special Use Property Management System). Available at: <http://spiunet.spu.planejamento.gov.br/Default.asp>.